



CES4KIDS

Sustainable Urban Mobility Plan

Agrupamento de Escolas Gardunha e Xisto
(AEGX), Fundão, Portugal





Urban Mobility

Co-funded by the
European Union



Vision



Mission



Methodology



Diagnosis



Action Plan

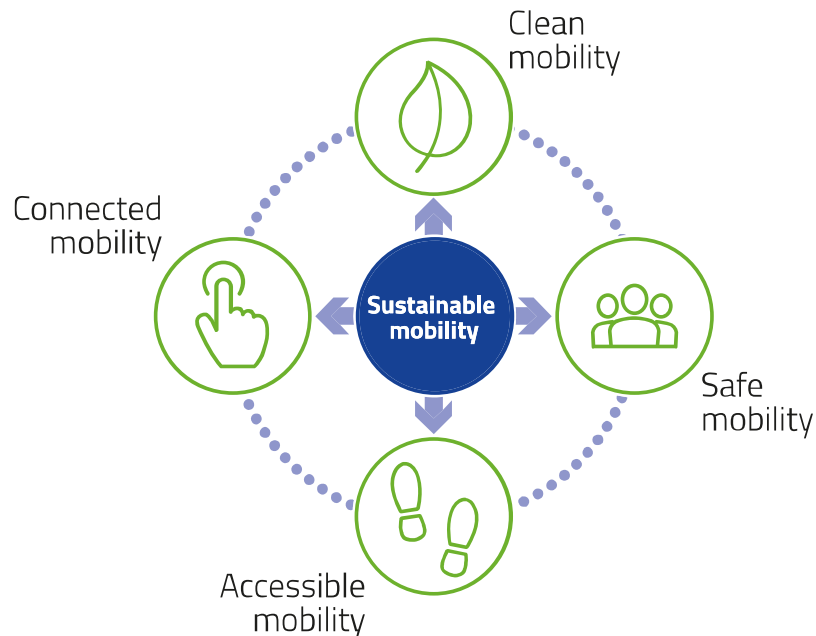


Monitoring

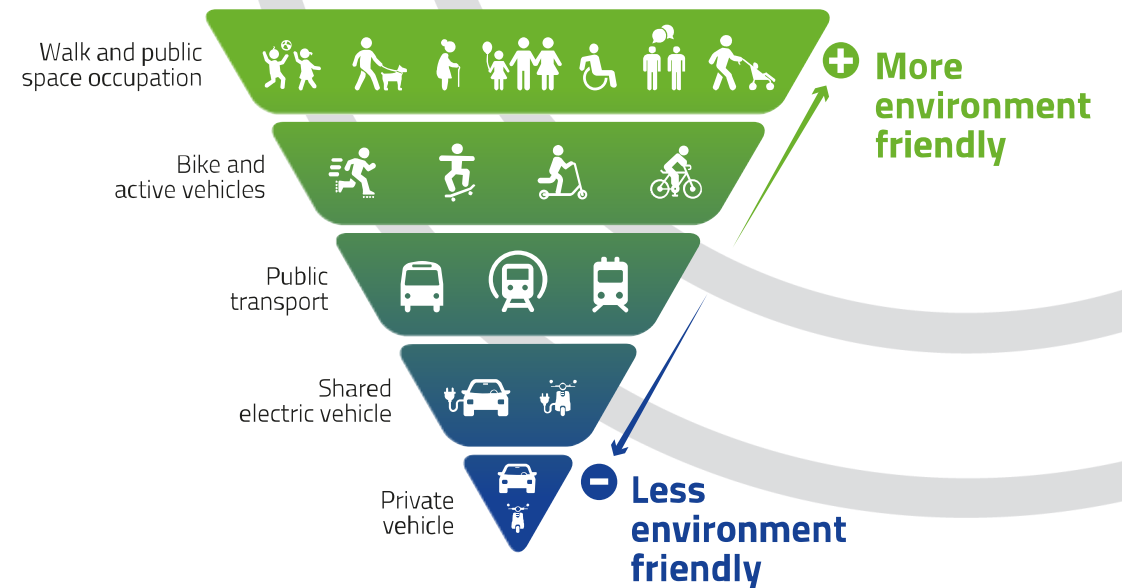


1. Vision

“Our school wants to improve the modal shift towards more sustainable modes such as active mobility (walking and bicycle) and public transport, which in turn seeks to minimize energy consumption and the negative effects on the environment and people's quality of life”



These four pillars consider the whole mobility ecosystem, having an impact on the people, the environment, the infrastructure and the technology.



The preference in public spaces and roads will be higher for the more environmentally friendly transport modes, while the most polluting forms will be a lower priority.

2. CES4KIDS Mission



CES4Kids' main objective is to deliver a complete and direct participation experience to children and youth in the co-creation of mobility planning, while at the

same time enabling the design of solutions aimed at improving mobility around schools which will suit better the needs and preferences of school pupils.

CES4Kids objectives

- Empower children and youth with the acquisition of knowledge and technical capabilities to address mobility challenges in order to make them actors of change
- Raise wider awareness of the sustainable mobility cause and influence school pupils' mobility behaviour to speed up change towards more sustainable mobility habits
- Give voice and prominence to school pupils in mobility strategic planning and decision-making processes
- Understand better pupils' mobility behaviour and preferences.
- Develop school pupils' capabilities in critical thinking, communication, networking, negotiation, problem resolution, leadership, entrepreneurship, civic engagement and social justice



2. School's Mission

Sustainable Mobility Plan objectives

- Promote active mobility and public transport modes for daily trips to school
- Reduce air and noise pollution and traffic congestion levels in the school surroundings
- Achieve a safer environment for children and youth in the school environment

3. Methodology



Information

Teaching of educational content with children

Pupils learn the main principles and concepts of sustainable mobility

Celebration of knowledge transfer and raise awareness events

Pupils visit public and private entities that work on the sustainable mobility field



Diagnosis

Hands-on learning in the urban environment

Pupils assess the urban environment of their school to identify barriers to a more sustainable mobility

Collection of data from children and families

Pupils and families answer a survey regarding their mobility habits and their preferences



Proposals

Participation process: Session 1

Pupils put in common the diagnosis and elaborate their own improvement proposals



Prioritisation

Participation process: Session 2

Pupils debate, vote and prioritise the improvement proposals playing a role game which involves different stakeholders

4. Diagnosis

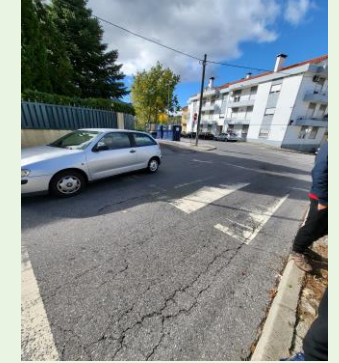
Description of the identified problems in your school's surrounding

Horizontal signage in a bad state and inexistence of vertical signage

Lack of pedestrians' safety

Traffic jams during the moments where large amounts of students enter or leave school

Graphic documentation of the problems



5. Action Plan

List of all Actions



Clean



Safe



Accessible



Connected

1. Improve/replace horizontal and vertical signage
2. Reordering and rerouting of the parking area
3. Improving the pavement and sidewalks



5. Action Plan

1. Improve/replace horizontal and vertical signage

Description of the problem

Horizontal signage in a bad state and inexistence of vertical signage

Goal (s)

Improve pedestrians' safety and mobility

Description of the action

Improve and/or replace horizontal and vertical signage



Choose which of the 4 pillars of mobility your action influences
(leave the title of all that apply and delete the rest)



**Clean
Mobility**



**Safe
Mobility**



**Accessible
Mobility**



**Connected
Mobility**

Link to video or solution map



5. Action Plan

2. Reordering and rerouting of the parking area

Description of the problem

Traffic jams during the moments where large amounts of students enter or leave school

Goal (s)

Improve pedestrians' safety and mobility patterns

Description of the action

Relocate the bus parking area



Choose which of the 4 pillars of mobility your action influences
(leave the title of all that apply and delete the rest)



**Clean
Mobility**



**Safe
Mobility**



**Accessible
Mobility**



**Connected
Mobility**

Link to video or solution map



5. Action Plan

3. Improving the pavement and sidewalks

Description of the problem

Lack of pedestrians' safety

Goal (s)

Improve pedestrians' safety and mobility patterns

Description of the action

Improving the pavement and sidewalks



Choose which of the 4 pillars of mobility your action influences
(leave the title of all that apply and delete the rest)



**Clean
Mobility**



**Safe
Mobility**



**Accessible
Mobility**



**Connected
Mobility**

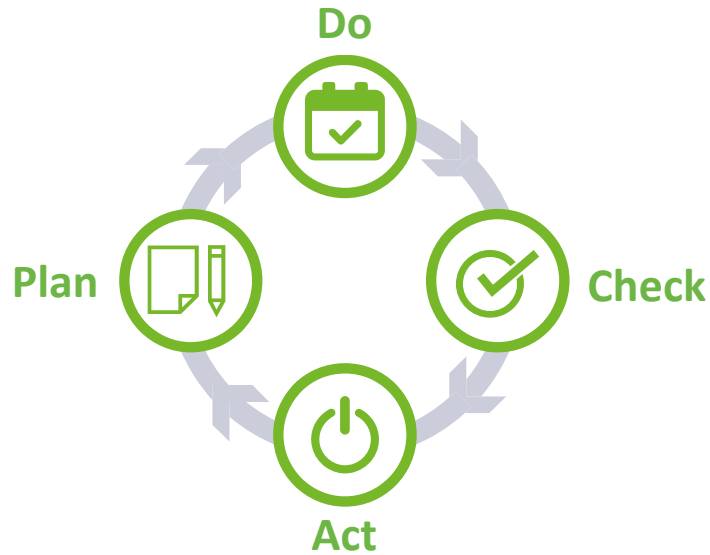
Link to video or solution map



6. Monitoring

PDCA Cycle

For achieving continuous improvement



Recognise an opportunity and **plan a change**



Implement the change, the **proposal**



Review, evaluate, and identify lessons learned



Take **actions** to continuous improvement



Check

Primary objective

To evaluate any impacts on pupils caused by the actions implemented.

- Evaluate data and results collected from previous phases.
- Compare with expected results to identify similarities or differences.
- Identify if there were changes from the original state of the context.
- Identify changes in a) students' mobility patterns, b) knowledge on sustainable mobility, and c) perception of schools' environments.

How to carry out the monitoring (check)?



Develop every 2 years

- Based on the one carried out within CES4Kids.
- Questions selected according to the information needed by each school.

6. Monitoring

Suggested survey structure and content*



Small survey
develop every
2 years

1

Sociodemographic
Information

Age

Gender

School

Academic year

2

Information on Mobility
Patterns

Main mode of
transport to get to
and from school

Length of the
journey (round-
trip)

Level of mobility
independency

3

Perceptions on Schools'
Surroundings

Do they like their
schools'
surroundings?

Do they feel safe?

What changes
would they make?

FAQ, suggestions
ands comments

4

Knowledge on
Sustainable Mobility

What is Sustainable
Mobility (SM) for
them?

Which are the 4
pillars of SM?







Students' and
families' mobility
habits

*Each school can include or
remove questions according to
their needs.

6. Monitoring

Diagnosis Matrix

1. Before the process

Action	Sustainable Mobility Pillars			
	Clean	Safe	Accessible	Connected
Action 1 Improve/replace horizontal and vertical signage				
Action 2 Reordering and rerouting of the parking area				
Action 3 Improving the pavement and sidewalks				



Urban Mobility

Co-funded by the
European Union





Thank you!

For more information, please contact:

info@eiturbanmobility.eu

www.eiturbanmobility.eu



 @EITUrbanMob

 [linkedin.com/company/eit-urban-mobility](https://www.linkedin.com/company/eit-urban-mobility)