



# CES4KIDS

## Sustainable Urban Mobility Plan

Gymnázium Christiana Dopplera , Praha 5,  
Zborovská 621/45





Urban Mobility

Co-funded by the  
European Union



Vision



Mission



Methodology



Diagnosis



Action Plan

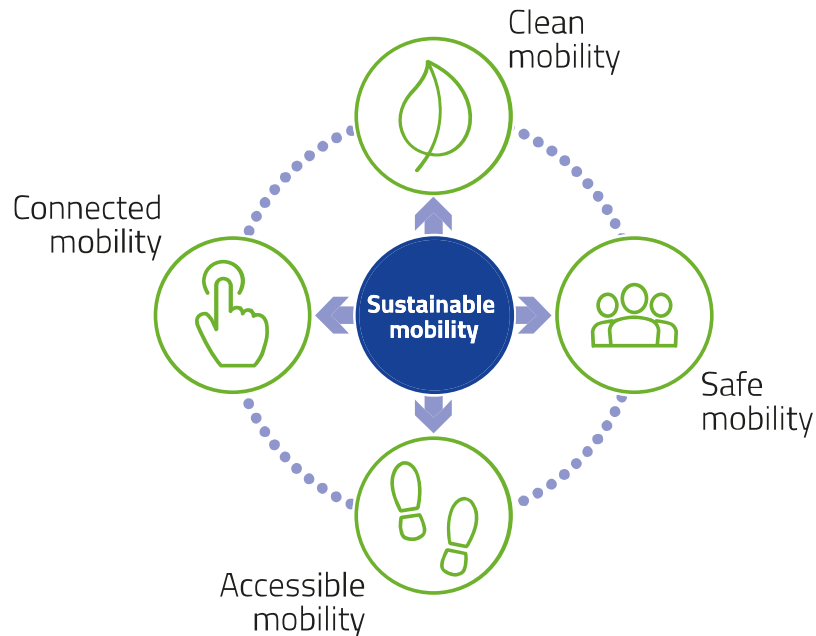


Monitoring

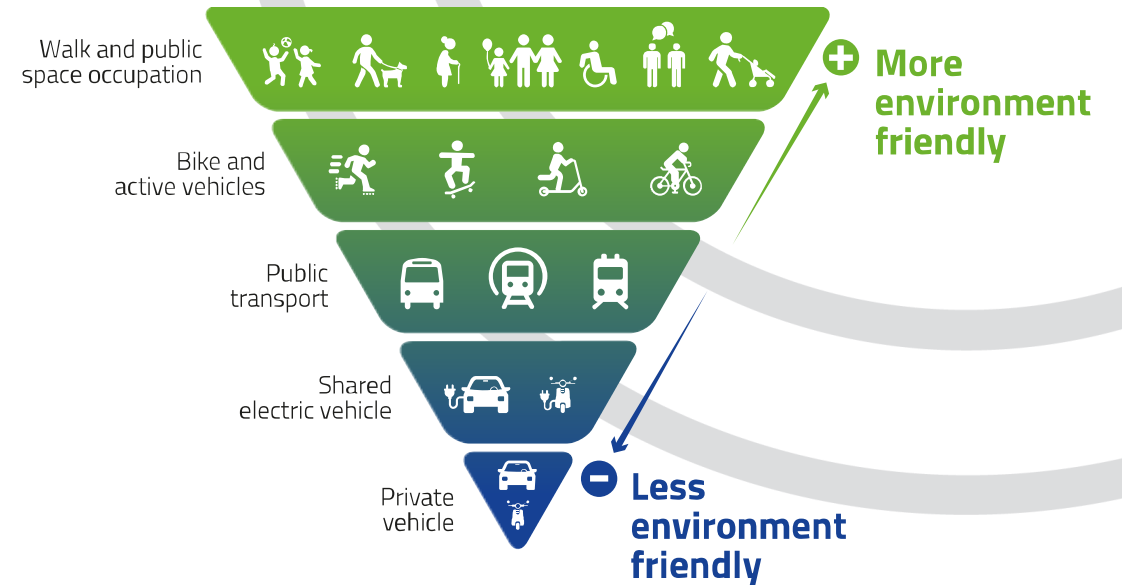


# 1. Vision

“Our school wants to improve the modal shift towards more sustainable modes such as active mobility (walking and bicycle) and public transport, which in turn seeks to minimize energy consumption and the negative effects on the environment and people's quality of life”



These four pillars consider the whole mobility ecosystem, having an impact on the people, the environment, the infrastructure and the technology.



The preference in public spaces and roads will be higher for the more environmentally friendly transport modes, while the most polluting forms will be a lower priority.

## 2. CES4KIDS Mission



CES4Kids' main objective is to deliver a complete and direct participation experience to children and youth in the co-creation of mobility planning, while at the

same time enabling the design of solutions aimed at improving mobility around schools which will suit better the needs and preferences of school pupils.

### CES4Kids objectives

- Empower children and youth with the acquisition of knowledge and technical capabilities to address mobility challenges in order to make them actors of change
- Raise wider awareness of the sustainable mobility cause and influence school pupils' mobility behaviour to speed up change towards more sustainable mobility habits
- Give voice and prominence to school pupils in mobility strategic planning and decision-making processes
- Understand better pupils' mobility behaviour and preferences.
- Develop school pupils' capabilities in critical thinking, communication, networking, negotiation, problem resolution, leadership, entrepreneurship, civic engagement and social justice



## 2. School's Mission

Specific mission of each school: to choose from the list depending on prioritized actions

### Sustainable Mobility Plan objectives

- Promote active mobility and public transport modes for daily trips to school
- Achieve a safer environment for children and youth in the school environment
- Ensure public space and transport accessibility for everyone
- Improve the quality of urban space around schools
- Avoid the negative health and environmental impacts of urban mobility
- Lower the negative externalities associated to the current mobility system

# 3. Methodology



## Information

### Teaching of educational content with children

Pupils learn the main principles and concepts of sustainable mobility

### Celebration of knowledge transfer and raise awareness events

Pupils visit public and private entities that work on the sustainable mobility field



## Diagnosis

### Hands-on learning in the urban environment

Pupils assess the urban environment of their school to identify barriers to a more sustainable mobility

### Collection of data from children and families

Pupils and families answer a survey regarding their mobility habits and their preferences



## Proposals

### Participation process: Session 1

Pupils put in common the diagnosis and elaborate their own improvement proposals



## Prioritisation

### Participation process: Session 2

Pupils debate, vote and prioritise the improvement proposals playing a role game which involves different stakeholders



# 4. Diagnosis

Description of the identified problems in your school's surrounding

- Modification of one particular tram stop to a safer one
- Increase the safety of transport in area

Graphic documentation of the problems



# 5. Action Plan

## List of all Actions (Number and Name)



Clean



Safe



Accessible



Connected

1. Initiate the construction of a safer tram stop in  
“Újezd” street



2. Increase the safety of public transport in area





# 5. Action Plan

## 1. Initiate the construction of a safer tram stop in “Újezd” street

### Description of the problem

As pupils use public transport more, safety is important to them. The tram stop in Újezd Street is located directly in the roadway where passengers cross with cars. Cars have to wait if the tram is at the stop, but dangerous traffic situations arise.

### Goal (s)

Initiate the construction of a safer tram stop in “Újezd” street

### Description of the action

Adapt the original tram stop to the new ones with a raised roadway, where cars have a natural barrier to entering the stop and have to slow down to let passengers get on and off safely. Contact the municipality or TSK (Prague technical road service provider) or Prague Transport Company and agree with them the procedure for the technical solution. Show them that this solution is wanted by the pupils and will help traffic safety. Work with school representatives on this solution.



**Choose which of the 4 pillars of mobility your action influences**

(leave the title of all that apply and delete the rest)



Clean  
Mobility



Safe  
Mobility



Accessible  
Mobility



Connected  
Mobility

**Link to video or solution map**



# 5. Action Plan

## 2. Increase the safety of public transport in area

### Description of the problem

In the street where the school is located there is a good traffic solution (one-way, there is also a cycle lane), but in the surrounding streets where pupils have to walk to the public transport stop there is a lack of better marking of crossings, traffic lights, or warning of the increased presence of pupils with signs.

### Goal (s)

Increase the safety of public transport in area

### Description of the action

It is proposed to install additional signs, light crossings in the surrounding streets where pupils going from school have to take public transport.



**Choose which of the 4 pillars of mobility your action influences**

(leave the title of all that apply and delete the rest)



Clean  
Mobility



Safe  
Mobility



Accessible  
Mobility



Connected  
Mobility

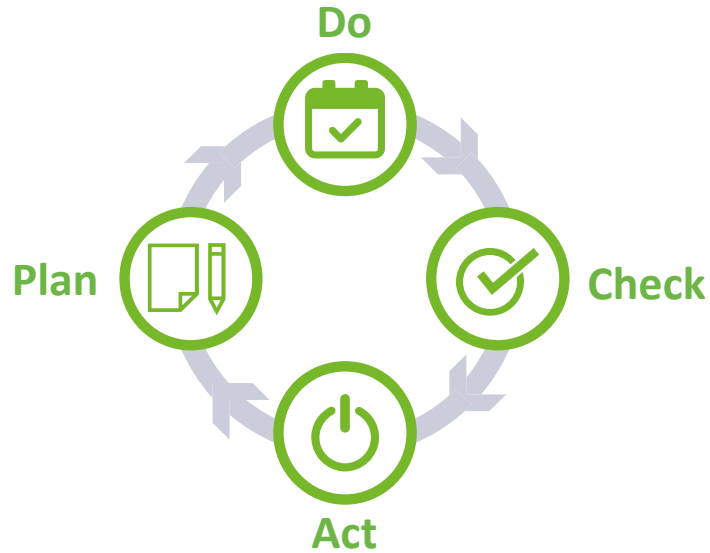
**Link to video or solution map**



# 6. Monitoring

## PDCA Cycle

For achieving continuous improvement



Recognise an opportunity and **plan a change**



Implement the change, the **proposal**



**Review, evaluate, and identify lessons learned**



Take **actions** to continuous improvement



**Check**

## Primary objective

To evaluate any impacts on pupils caused by the actions implemented.

- Evaluate data and results collected from previous phases.
- Compare with expected results to identify similarities or differences.
- Identify if there were changes from the original state of the context.
- Identify changes in a) students' mobility patterns, b) knowledge on sustainable mobility, and c) perception of schools' environments.

## How to carry out the monitoring (check)?



Develop every 2 years

- Based on the one carried out within CES4Kids.
- Questions selected according to the information needed by each school.

# 6. Monitoring

## Suggested survey structure and content\*



Small survey  
develop every  
2 years

1

Sociodemographic  
Information

Age

Gender

School

Academic year

2

Information on Mobility  
Patterns

Main mode of  
transport to get to  
and from school

Length of the  
journey (round-  
trip)

Level of mobility  
independency

3

Perceptions on Schools'  
Surroundings

Do they like their  
schools'  
surroundings?

Do they feel safe?

What changes  
would they make?

FAQ, suggestions  
ands comments

4

Knowledge on  
Sustainable Mobility

What is Sustainable  
Mobility (SM) for  
them?

Which are the 4  
pillars of SM?


Students' and  
families' mobility  
habits

\*Each school can include or  
remove questions according to  
their needs.

# 6. Monitoring

## Diagnosis Matrix

1. Before the process

Action	Sustainable Mobility Pillars			
	Clean	Safe	Accessible	Connected
<b>Action 1</b> Initiate the construction of a safer tram stop in “Újezd” street				
<b>Action 2</b> Increase the safety of public transport in area		 		





Urban Mobility

Co-funded by the  
European Union







# Thank you!

For more information, please contact:

info@eiturbanmobility.eu

[www.eiturbanmobility.eu](http://www.eiturbanmobility.eu)

 @EITUrbanMob

 [linkedin.com/company/eit-urban-mobility](https://www.linkedin.com/company/eit-urban-mobility)

